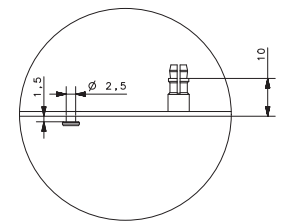


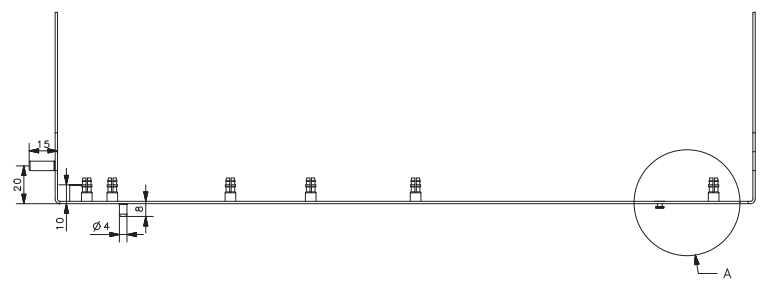
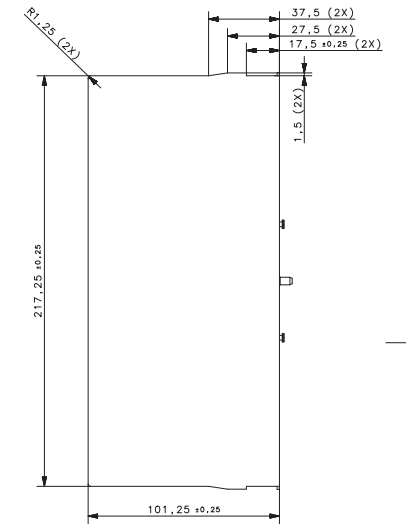
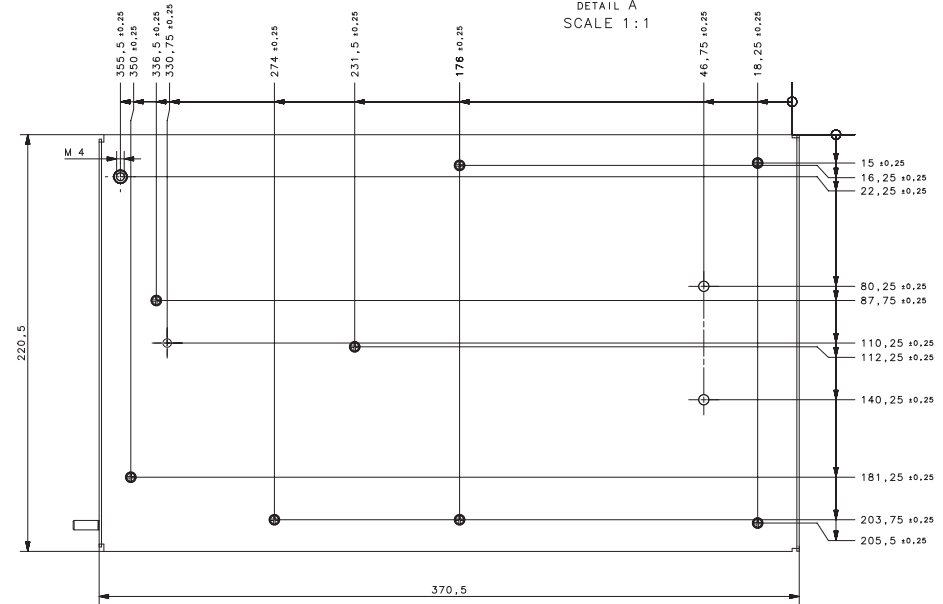
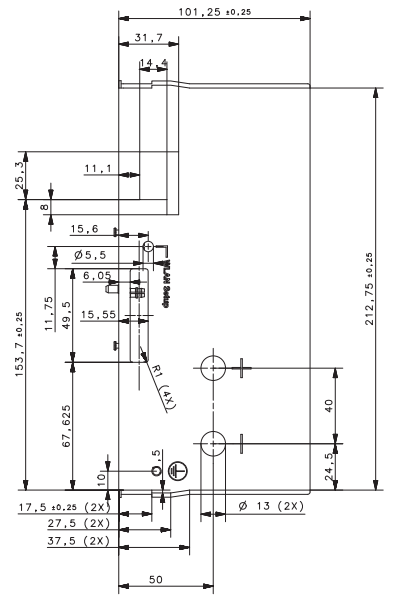
SCALE 1:5

SCALE 1:5

For screening see MCH656412003R01.eps



DETAIL A  
SCALE 1:1



TOLERANCES AND DIMENSIONS (unless otherwise specified)	
LINEAR DIMENSIONS	< 100 mm ±0.3 mm
	100-500 mm ±0.5 mm
	500-1000 mm ±1.0 mm
	> 1000 mm ±2.0 mm
ANGLES	±1.0°
HOLE Ø	±0.1 mm
Inside Bend Radius	Max. Sheet Thickness

- MACHINING AND DELIVERY NOTES**
- REMOVE ALL SHARP EDGES AND BURRS
  - REMOVE ALL MACHINING RESIDUES, PRODUCT MUST BE CLEAR AND DEGREASED
  - INSTALL INSERTS/PRESS IN COMPONENTS AS SPECIFIED BY THE PRODUCER AFTER FINISHING
  - VISIBLE SURFACES ARE MARKED WITH VS
  - TRANSPORT SHALL NOT CAUSE ANY DAMAGE TO THE PRODUCT OR ITS SPECIFICATIONS
  - PRODUCT MUST BE ROHS AND GREEN COMPLIANT

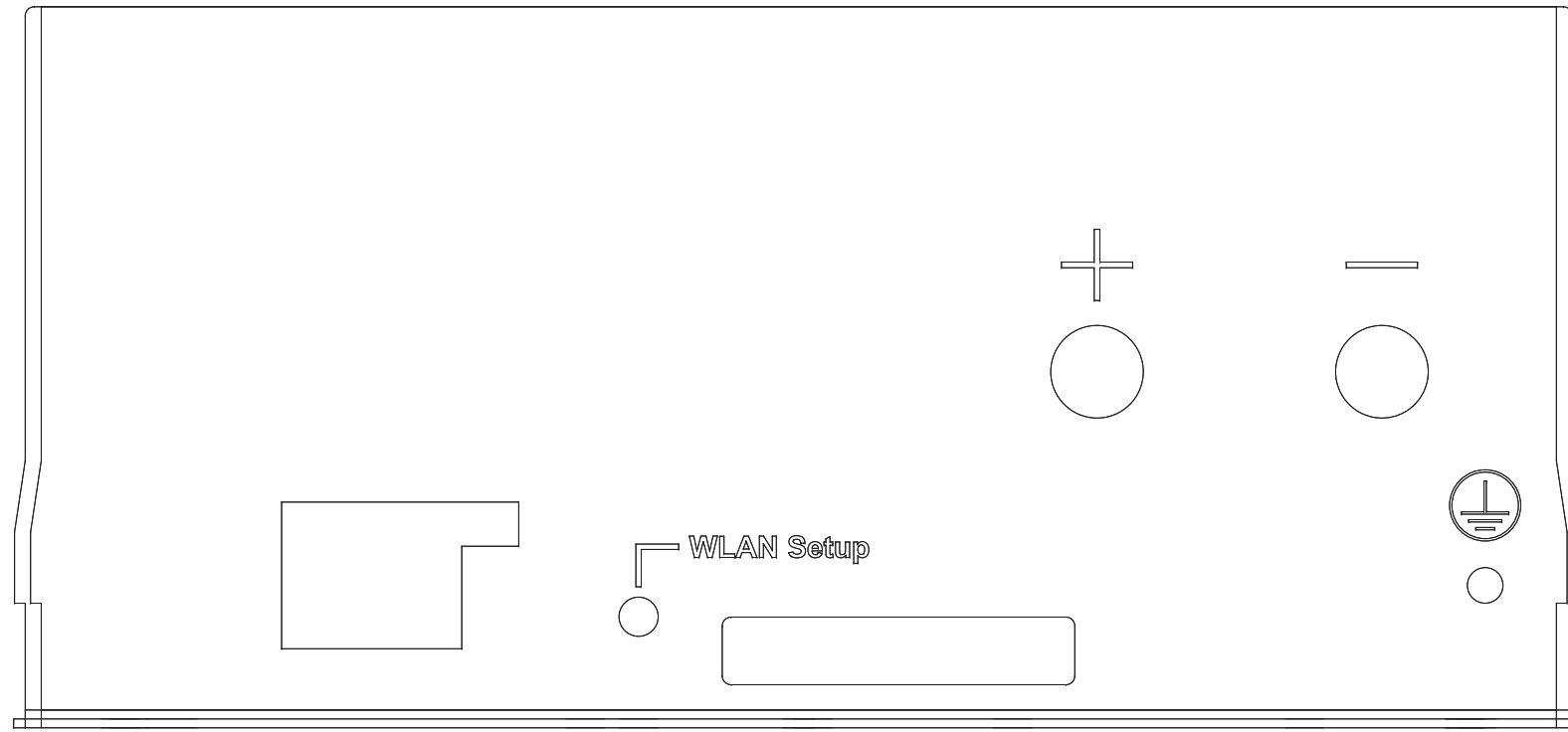
MODIFICATION HISTORY	
Release	Description
R01	First Release

ITEM	QTY	DESCRIPTION	PRODRIVE PN	MFR PN	MANUFACTURER
5	1	Self Clinching Pilot Pin 4mm		TPS-4MM-8/TR-TP-4-08	PEM/TR-Fasteners
4	1	Grounding Standoff		SOSG-3.5M4-10/CF/SOSGM-10	PEM/Captive Fastener
3	2	Panel to Panel Fastener		SKC-F1.8/TR-SK-61.5-01	PEM/TR-Fasteners
2	1	Self clinching Threaded Studs		FH-MS-15/TR-FH-MS-15	PEM/TR-Fasteners
1	6	Snap-top/Self-Clinch Standoffs		SSS-4mm-10/TR-SSS-4-10	PEM/TR-Fasteners

DESIGNER: s	SCALE: 1:2	MATERIAL: DMSD4275-W-A-C (1.0228)	PN PART:
DATE: 19-Oct-2012	UNITS: MM	TREATMENT: -No Treatment	
REVIEWER: J	SIZE: A2	THICKNESS: 1.25	PN DRAWING:
EXT REVIEWER:	QUALITY GRADE: PDD-B-x-b	SFD0001091332906	
PROJECT: SD120000			
PRODUCT: Soladin 1kW+ bottom metal enclosure			

Edite  
Copy  
For E



Text and symbol: Fillet in  
 Text and symbol color: Black  
 Location: According drawing

	DESIGNER: SanRul	SCALE: 1:1	MATERIAL: -	PN PART:
	DATE: 15-10-2012	UNITS: MM	TREATMENT: -	
	REVIEWER:	SIZE: A3	THICKNESS: -	PN DRAWING:
	EXT REVIEW:	QUALITY GRADE: PDQ-C-x-b	SPD6001091332R06	
PROJECT: SD120000			PRODUCT: Screening Soladin 1kW+ bottom metal enclosure	