
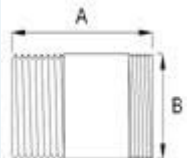

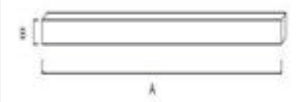
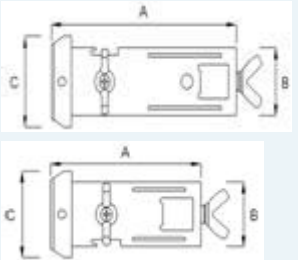
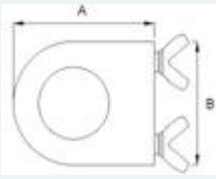


Technical Drawing	Reference	Diameter (inch)	Thread	Length Inch (mm)	Pressure Psi (kPa)	Minimum Bend radius Inch (mm)	Material
FLEXIBLE HOSES							
	FLEX/B/0790	1"	MF	24,2 (615)	200 (1380)	7 (175)	SUS304 stainless steel corrugated
	FLEX/B/0915	1"	MF	29,1 (740)	200 (1380)	7 (175)	
	FLEX/B/1220	1"	MF	41,1 (1045)	200 (1380)	7 (175)	
	FLEX/B/1525	1"	MF	53,1 (1350)	200 (1380)	7 (175)	
View technical data sheet				A Length Inch (mm)	B Length Inch (mm)	C Length Inch (mm)	
NIPPLE							
	FLEX/NIPPLE/B	1"	BSP-MF	2,16 (55)	1,38 (35)		carbon steel zinc plated
View technical data sheet							
REDUCERS							
	FLEX/RED/N/A/1	1" - 1/2"	NPT-MF	5,51 (140)	1,30 (33)	0,98 (25)	carbon steel zinc plated
	FLEX/RED/N/B/1	1" - 3/4"	NPT-MF	5,51 (140)	1,30 (33)	1,18 (30)	
View technical data sheet							
BARS							
	FLEX/BAR			27,56 (700)	0,59 (15)		carbon steel zinc plated
View technical data sheet							
BAR FIXING CLAMPS							
	FLEX/CLA/L			4,09 (104)	1,18 (30)	1,57 (40)	carbon steel zinc plated
	FLEX/CLA/S			3,07 (78)	1,18 (30)	1,57 (40)	
View technical data sheet							

BRACKETS



FLEX/BRACKET

2,36
(60) 2,75
(70)

carbon
steel
zinc plated

[View technical data sheet](#)